

confetto.premium 1233



Model Code F5679

date of issue 09-06-23 revision 00
revision of 06-12-24 (the present replaces any previous versions)

Designer: centro studi interno.

Structure: pinewood, multilayer and plywood covered with polyurethane foam.

Spring system: elastic webbing

Seat Padding: seat cushions in ecological polyurethane foam, covered with 100% polyester padding

Back Padding: backrests in ecological polyurethane foam, covered with 100% polyester padding

Arm Interior: armrests in ecological polyurethane foam, covered with 100% polyester padding

Removability: not available

Sewing: leather covers feasible with contrast stitching in the colors available; cuts and sewing vary on microfibre (or fabric) covers.

Mechanisms: the model is equipped with headrests that can be manually lifted. The height of the model with lifted headrests is 97 cm. Reclining versions available with power recliner mechanism, actioned by a button panel positioned on the seat sides (PULS_2). The maximum depth of the model with recliner mechanism completely open is 166 cm.

Standard feet: the model is lifted 13 cm off the floor. PM2291 on armrest sides, PM2262 on armless sides and footstools, all in metal with standard matt black finish. The sample book also includes finishes, such as shiny metal or satinized, antique bronze or graubraun ral 8019. Some versions may be equipped with hidden feet with a supporting structural function.

Density of seat and back kg/cbm (±5%) ⁽¹⁾

Markets	Seat	Back
I	35 Medium HR	27 HR
D - NL - CH	35 hard HR	28 hard HR
USA - California	35 soft HR	27 soft HR
GB	37 fire retardant	31 fire retardant
Others	35 Medium HR	27 HR

⁽¹⁾Density: volume mass apparently determined on materials without any kind of covers and according to the UNI EN ISO 845 regulations. Indicated values refer to production averages; the Company reserves the right, if needed, to make changes to the declared technical characteristics. Before use, it is advisable to look at the SAFETY INFORMATION TECHNIQUE for info regarding use and protection of people and of the environment, in compliance with existing EEC regulations.

Coverings

	suggested	not suggested	not possible
thick leathers	✓		
thin elastic leathers	✓		
natural leathers	✓		
fabric*	✓		
microfibre*	✓		
leather + split	✓		
DeLuxe*			✓
multi colour**			✓
multi-category**			✓
multi covering**			✓

Please note: for not removable models, only one colour fabric covers are available.

* Deluxe, Fabrics and microfibers are not available for the U.K. - USA/CA - IE market.



PULS_2

Feet



PM2291

PM1056

PM2262

We reserve the right to amend materials, covers and product dimensions shown on the data sheet, for production purposes and without prior notice. The line drawings, graphic information, dimensions, and volume provided are approximate and may vary due to the tolerances allowed in the production process with a view to improvements. The following maximum load values are recommended under normal use: armchairs max. 120 kg, 2-seater sofas max. 200 kg (2x100 kg), 3-seater sofas max. 240 kg (3x80 kg). Exceeding the recommended load may cause a structural failure of the sofa/armchair or its components.

Ottoman

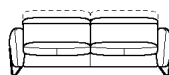
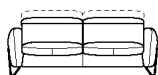
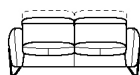
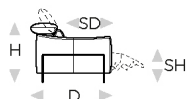


↑ fold following the dotted line ↑

confetto.premium 1233



L Length - H Height - D Depth - SH Seat Height - SD Seat Depth
Dimensions refer to maximum sizes of the version with closed mechanism (where available).



dimensions

L 169/67"
H78/31" D108/43"
SH45/18" SD57/22"

L 192/76"
H78/31" D108/43"
SH45/18" SD57/22"

L 208/82"
H78/31" D108/43"
SH45/18" SD57/22"

L 65/26"
H45/18" D65/26"
SH0/0" SD0/0"

L 85/33"
H78/31" D108/43"
SH45/18" SD57/22"

version code

200

240

300

540

B68

Description

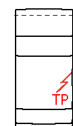
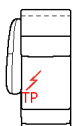
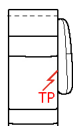
2 seater

2 1/2 seater

3 seater

ottoman

mini chair raf



L 85/33"
H78/31" D108/43"
SH45/18" SD57/22"

L 85/33"
H78/31" D108/43"
SH45/18" SD57/22"

L 85/33"
H78/31" D108/43"
SH45/18" SD57/22"

L 96/38"
H78/31" D108/43"
SH45/18" SD57/22"

L 96/38"
H78/31" D108/43"
SH45/18" SD57/22"

L 96/38"
H78/31" D108/43"
SH45/18" SD57/22"

B69

C36

C37

110

120

173

mini chair raf

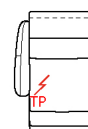
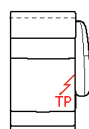
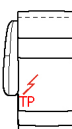
rf el.rec.mini
chair

lhf el.rec.mini
chair

1 right arm
facing chair

1 left arm facing
chair

elec.rec.chair
1 arm raf



L 96/38"
H78/31" D108/43"
SH45/18" SD57/22"

L 104/41"
H78/31" D108/43"
SH45/18" SD57/22"

L 104/41"
H78/31" D108/43"
SH45/18" SD57/22"

L 104/41"
H78/31" D108/43"
SH45/18" SD57/22"

L 104/41"
H78/31" D108/43"
SH45/18" SD57/22"

174

114

124

612

613

elec.rec.chair
1 arm raf

rhf maxi chair

lhf maxi chair

1 raf maxi chair
rec.el

1laf maxi chair
rec.el

↓ fold following the dotted line ↓

